

**ITEM 36. PARKING – P 5 MINUTE PARKING – FOSS STREET FOREST  
LODGE**

**TRIM RECORD NO: 2016/221348**

**RECOMMENDATION**

It is recommended that the Committee endorse the reallocation of parking on the eastern side of Foss Street, Forest Lodge, between the points 18.5 metres and 32.5 metres (two car spaces), north of Bridge Road as “P 5 Minute 8.30am-9.30am, 3pm-4pm School Days.

**VOTING MEMBERS FOR THIS ITEM**

<i>Voting Members</i>	<i>Support</i>	<i>Object</i>
City of Sydney		
Roads and Maritime Services		
NSW Police – Leichhardt LAC		
Representative for the Member for Balmain		

**DECISION**

**BACKGROUND**

Forest Lodge Public School have advised that the disability parking spaces in Foss Street is no longer required and that the parking can be reallocated to “P 5 Minute”.

**COMMENTS**

The subject kerb space on the eastern side of Foss Street, north of Bridge Road, is currently signposted as “P 15 Minute Disability Parking Only 8.30am-9.30am, 3pm-4pm School Days”.

Forest Lodge Public School have advised that the disability parking spaces is no longer required and that the parking can be reallocated to “P 5 Minute” to increase the number of spaces for pick-up and drop-off.

**CONSULTATION**

The City consulted local residents and businesses in the area. There were 55 letters sent out with one response supporting the proposal and no responses opposing the proposal.

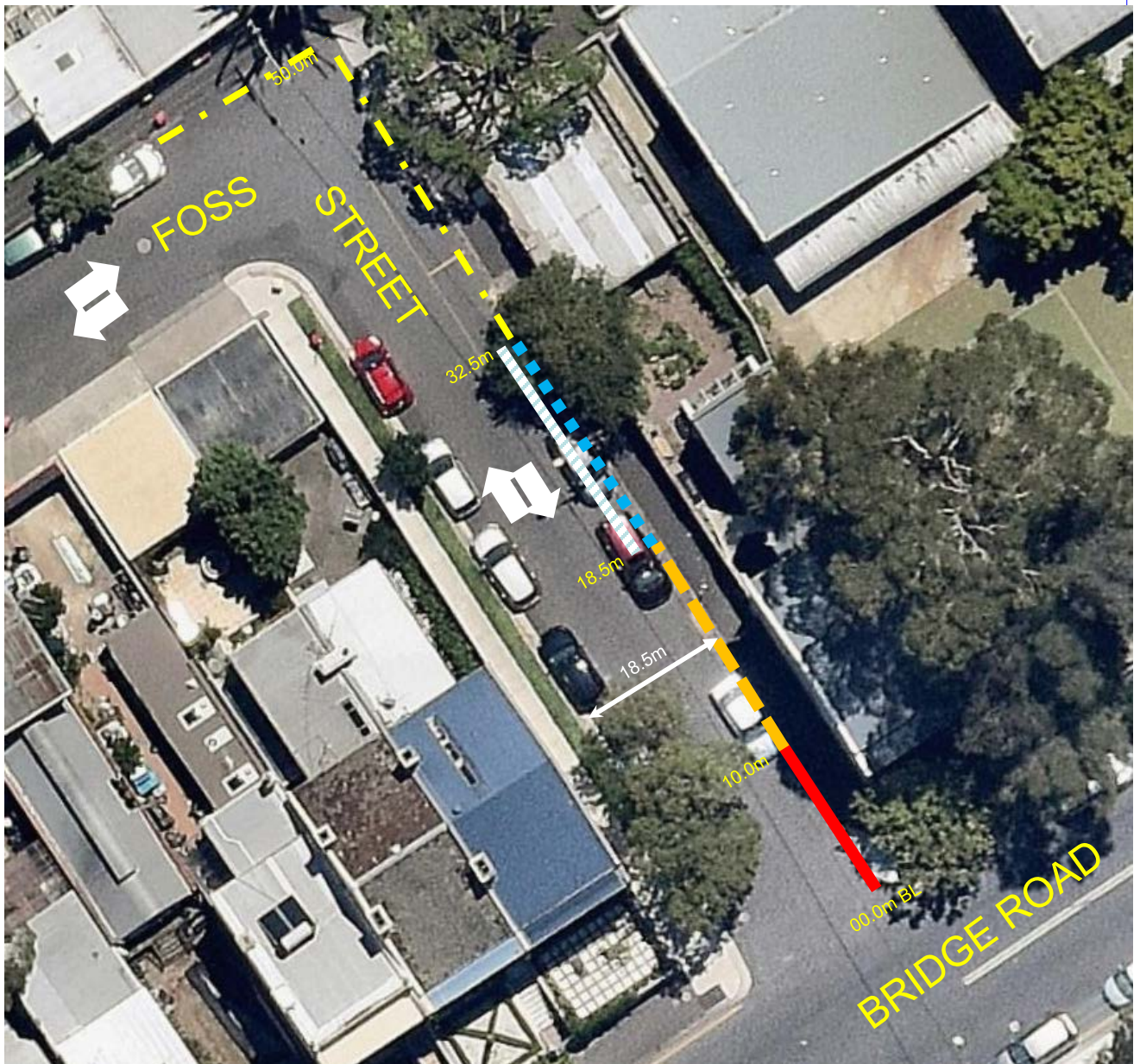
**FINANCIAL**

Funds are available in the current budget.

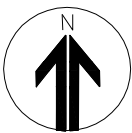
**ATTACHMENTS**

Parking – P 5 Minute Parking – Foss Street Forest Lodge

Rodney King, Senior Traffic Engineer



- Existing "No Stopping"
- Existing "No Parking"
- Existing "P 5 Minutes 8.30am-9.30am 3pm-4pm School Days"
- Existing "P 15 Minutes Disability Parking Only 8.30am-9.30am 3pm-4pm School Days"
- Proposed "P 5 Minutes 8.30am-9.30am 3pm-4pm School Days"



## PROPOSAL

Foss Street, Forest Lodge  
Removal of Disability Parking

